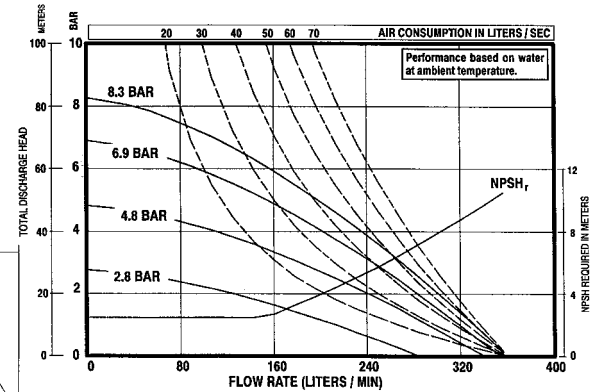
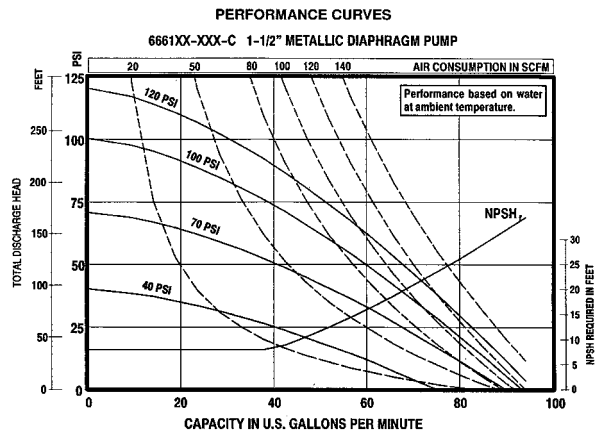
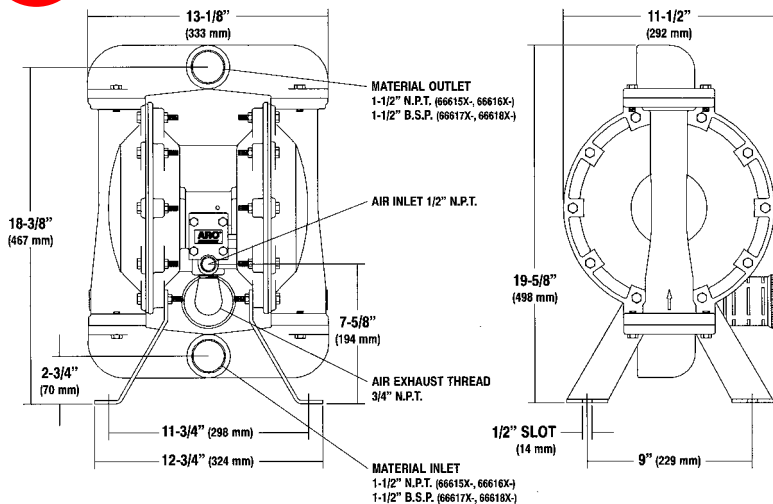


# Performance Specifications

<b>RATIO:</b>	1:1
<b>MAXIMUM G.P.M. (Liters):</b>	100 (379)
<b>DISPLACEMENT GALLONS (Liters) PER CYCLE:</b>	.73 (2.76)
<b>AIR INLET:</b>	1/2-inch NPT(F)
<b>FLUID INLET:</b>	1-1/2-inch NPT(F) or BSP(F)
<b>FLUID OUTLET:</b>	1-1/2-inch NPT(F) or BSP(F)
<b>MAX. OPERATING PRESSURE PSI (bar):</b>	120 (8.3)
<b>SUSPENDED SOLIDS MAX. DIA. IN. (mm):</b>	1/4-inch (6.4)
<b>WEIGHT - LBS. (Kg):</b>	51 (23.1) Aluminum 84 (38.1) Stainless Steel For Cast Iron center section models, add 23 lbs. (10.4 kg.)
<b>MAX. DRY SUCTION LIFT:</b>	19 ft. (Rubber fitted)



# Dimensional Data



# Accessories

**Recommended Filter/Regulator**  
Filter / Regulator: P29241-610  
(See Page 49)

For Pulsation Dampener, see page 32.  
For complete airline connection kit, see page 34.

For Diaphragm Pump Accessories see pages 33-34.



P29241-610

# Ordering

Best Selling Models | 666150-322-C, 666150-344-C, 666151-344-C, 666161-244-C

<p><b>Base Model</b></p> <p>6 6 6 1</p> <p>1-1/2" Pump</p>	<p><b>Air Motor</b></p> <p>X</p> <p>5 Aluminum 6 Cast Iron 7 BSP Aluminum 8 BSP Cast Iron</p>	<p><b>Wetted Parts</b></p> <p>X</p> <p>0 Aluminum 1 316 Stainless Steel A Aluminum w/SS Hardware B 316 SS w/SS Hardware</p>	<p><b>Check Valve Seats</b></p> <p>X</p> <p>2 316 Stainless Steel 3 Polypropylene 8 400 SS (Hardened)</p>	<p><b>Ball Check/Diaphragm</b></p> <p>X X X</p> <p>22 Nitrile/Nitrile 44 Teflon/Teflon EB Santoprene/Santoprene</p>	<p><b>C</b></p>
--	---	---	---	---	-----------------

For viscous materials, stainless steel ball & checks available

