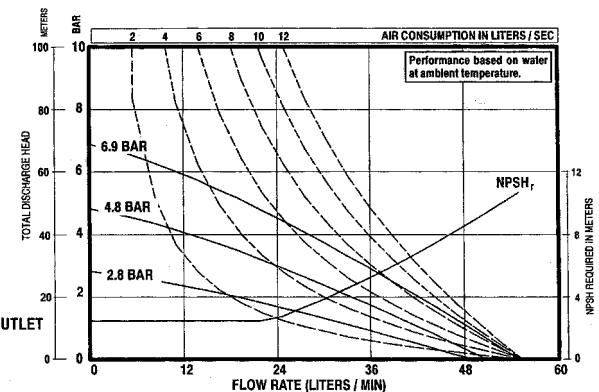
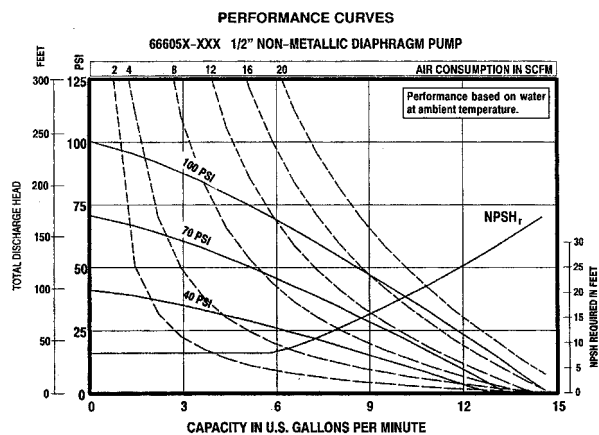
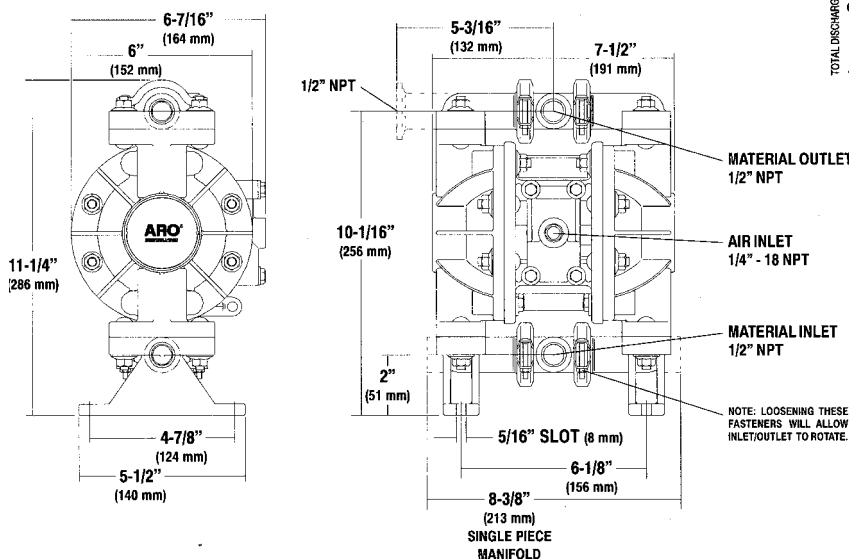


# Performance Specifications

<b>RATIO:</b>	1:1
<b>MAXIMUM G.P.M. (Liters):</b>	13 (49) Ball 10 (37.9) Duckbill Check
<b>DISPLACEMENT GALLONS (Liters) PER CYCLE:</b>	.04 (.15) Ball .032 (.12) Duckbill Check
<b>AIR INLET:</b>	1/4-inch NPT(F)
<b>FLUID INLET:</b>	1/2-inch NPT(F)
<b>FLUID OUTLET:</b>	1/2-inch NPT(F)
<b>MAX. OPERATING PRESSURE PSI (bar):</b>	100 (6.9)
<b>SUSPENDED SOLIDS MAX. DIA. IN. (mm):</b>	3/32-inch (2.4) Duckbill Check- Fibers
<b>WEIGHT - LBS. (Kg):</b>	7.2 (3.3) Polypropylene
<b>MAX. DRY SUCTION LIFT:</b>	10 ft. (Teflon fitted)



# Dimensional Data



**Single-Piece Manifold Model**  
(Order model 66605J)

# Accessories

**Recommended Filter/Regulator**  
Filter / Regulator: P29122-600  
(See Page 49)

For Pulsation Dampener, see page 31.

For complete airline connection kit, see page 34.

For Diaphragm Pump Accessories see pages 33-34.



P29122-600

# Ordering

Best Selling Models | 66605J-388, 66605J-3EB, 66605J-344

Base Model				Air Motor	Wetted Parts	-	Check Valve Seats	Ball Check/ Diaphragm
6	6	6	0	5	X	-	X	X
1/2" Pump				Polypropylene			2 Stainless Steel	22 Nitrile/Nitrile
				J* Polypropylene			3 Polypropylene	44 Teflon/Teflon
				3 Polypropylene			6 Acetal	88 Polyurethane/Polyurethane
				* Single piece manifold			0 Duckbill	A4 Stainless Steel/Teflon
								EB Santoprene/Santoprene
								D2 Nitrile/Nitrile

All hardware is 300 Series Stainless Steel.

See next page for special, groundable models